

DTA Series

Diffused Aeration Tank Stripper



Features & Specifications *(Patent pending)*

- 304 Stainless steel welded tank construction
- Clearwell for pump out or gravity drain discharge
- (2) 304 Stainless steel fouling-resistant coarse bubble diffusers per chamber with PVC risers and unions above the water line for easy removal
- Centrifugal pressure blower operating under forced or induced draft, welded steel volute and stand, aluminum wheel, special coatings available
- Full removable top cover for easy access to entire cross section, D-ring buna-N cover gasket
- Over and under weirs and baffles to distribute water across each chamber for maximum residence time, aeration and removal efficiency
- Stainless steel hermetically sealed float rod assembly (single or multiple floats for pump control)
- 6" High steel skid 125 lb flanged influent & effluent connections with conical gussets
- Flanged air inlet with diffuser for distribution
- Steel skid with C6x8.2 joists and frame members continuously welded at the ends, 3/16" steel deck with 1" fillet welds every 12" on center, fork pockets
- PVC air inlet transition piping with flexible coupling for vibration isolation
- Polypropylene demister on vapor discharge to remove 99% of 10 micron and larger droplets
- 3/4" Drain valves for sump and aeration chambers
- Internal PVC air distributor header
- Clearwell for pumping directly from unit
- 2" PVC Sump level site glass with flange connections for easy removal

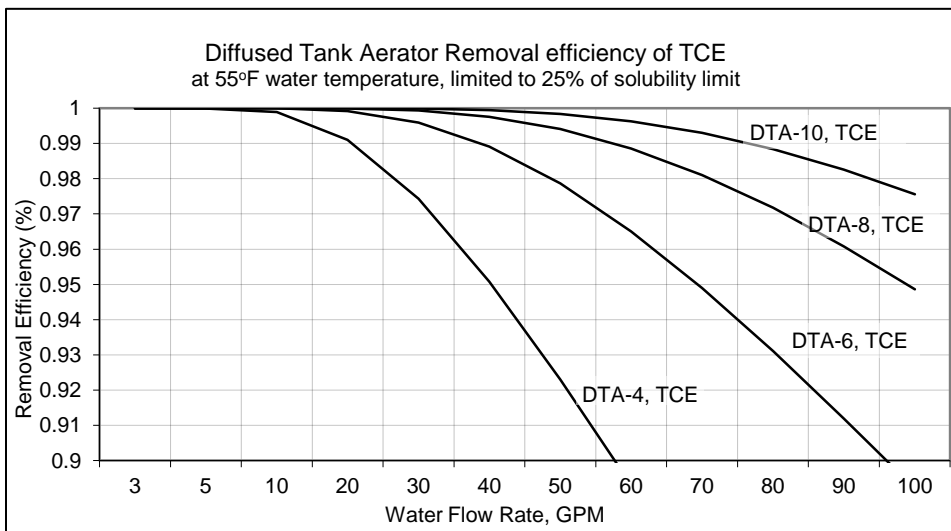
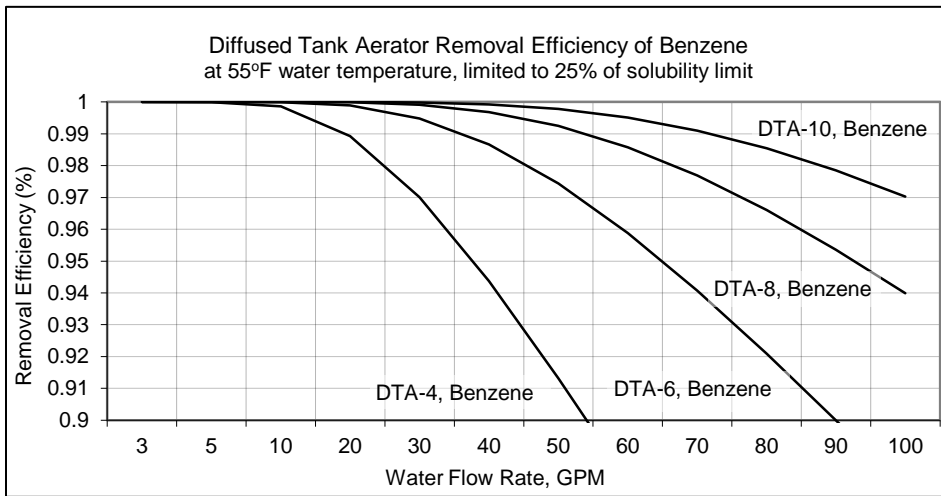
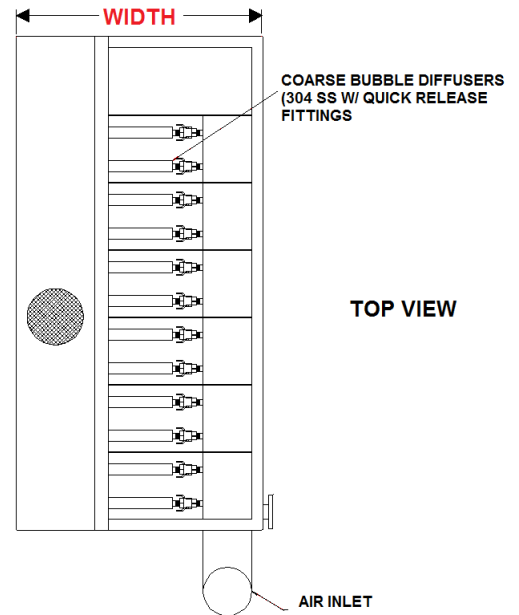
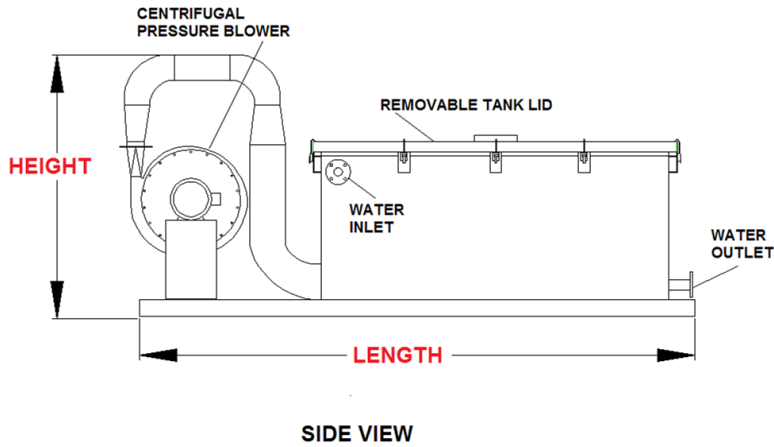


Applications

- Groundwater /wastewater treatment
- Radon removal
- Removal of dissolved chlorinated organic compounds from water (TCE, PCE, TCA, DCA...)
- Removal of gasoline range organics (BTEX compounds), DRO & other hydrocarbons from water (including MTBE)
- Iron oxidation for subsequent filtration
- H₂S Removal
- Carbon dioxide removal
- Methane removal
- THM's

H2K Technologies, Inc.
7550 Commerce St
Corcoran, MN 55340
Phone: 763.746.9900
Fax: 763.746.9903
www.H2KTECH.com
Sales@H2KTECH.com

Model Number	Number of aeration chambers	Liquid Flow Range, GPM	Air flow SCFM	Length Feet	Height Feet	Width Feet	Inlet/Outlet connection, Standard	Vapor discharge connection, inches	Standard sump holding capacity Gallons	Shipping Weight Lbs.	Operating Weight Lbs.
DTA-4	4	1-225	320	10.5	5.5	3.5	2" FPT	(2) 4"	35	1,790	3,200
DTA-6	6	1-225	480	12.5	6	4	2" FPT	(2) 8"	40	2,665	6,240
DTA-8	8	1-225	640	14.5	6	4	2" FPT	(2) 8"	40	2,980	7,820
DTA-10	10	1-450	800	11.5	6	8	2" FPT	(2) 10"	80	3,570	9,250
DTA-12	12	1-450	960	12.5	6	8	4" 150lb flng	(2) 10"	80	3,990	10,100
DTA-16	16	1-450	1,280	15.5	6	8	4" 150 lb flng	(2) 10"	80	4,690	11,230



Options

- Epoxy painted steel, fiberglass reinforced plastic construction or welded polypropylene construction
- Larger clearwell for more pump down volume
- High flow units up to 300 gpm
- Sound enclosure with urethane sound insulation to reduce sound level 10-15 dBA at 3
- Centrifugal discharge pump & level controls
- Heat trace or immersion heaters for classified or non-classified electrical areas for freeze protection
- Induced draft blower configuration for humidity
- R-5 insulation with jacket, (FRP or aluminum jacket)
- Custom control panel to control blower, pump and other equipment if required
- Process duct heater to lower humidity in off gas vapor before vapor GAC treatment
- Off gas ducting, FRP, PVC, coated or hot dipped galvanized steel construction
- Enclosures or trailer for freeze protection or mobility
- Flow, pressure, level & temperature gages or transmitters

Additional Photos

