

VLS Series Vapor/Liquid Separators



Features & Specifications

- All Welded Steel construction, ASTM A-36 sheet steel
- 17" Hg vacuum design rating (optional full vacuum design available)
- Polypropylene demister element covering entire separator cross section to minimize vapor velocity & maximize water coalescing
- Tangential inlet utilizing centrifugal force for gross water/air separation (95%+ By Volume)
- 2" PVC site glass with unions for easy removal
- Steel baffle cover over water holding volume to prevent re-entrainment of water into air stream
- Stainless steel hermetically sealed float rod assembly (single or multiple floats)
- All zinc plated steel hardware
- Enamel external finish (optional internal & external finishes available)
- 99% + moisture removal of 10 micron and larger droplets (due to coalescing)
- Optional air filter with polyester element sized for specific blower, housed in separator (polyester element standard)
- 2" NPT half coupling for pump out or gravity drain, 1/4" NPT gage port on inlet
- Neoprene full face top cover gasket

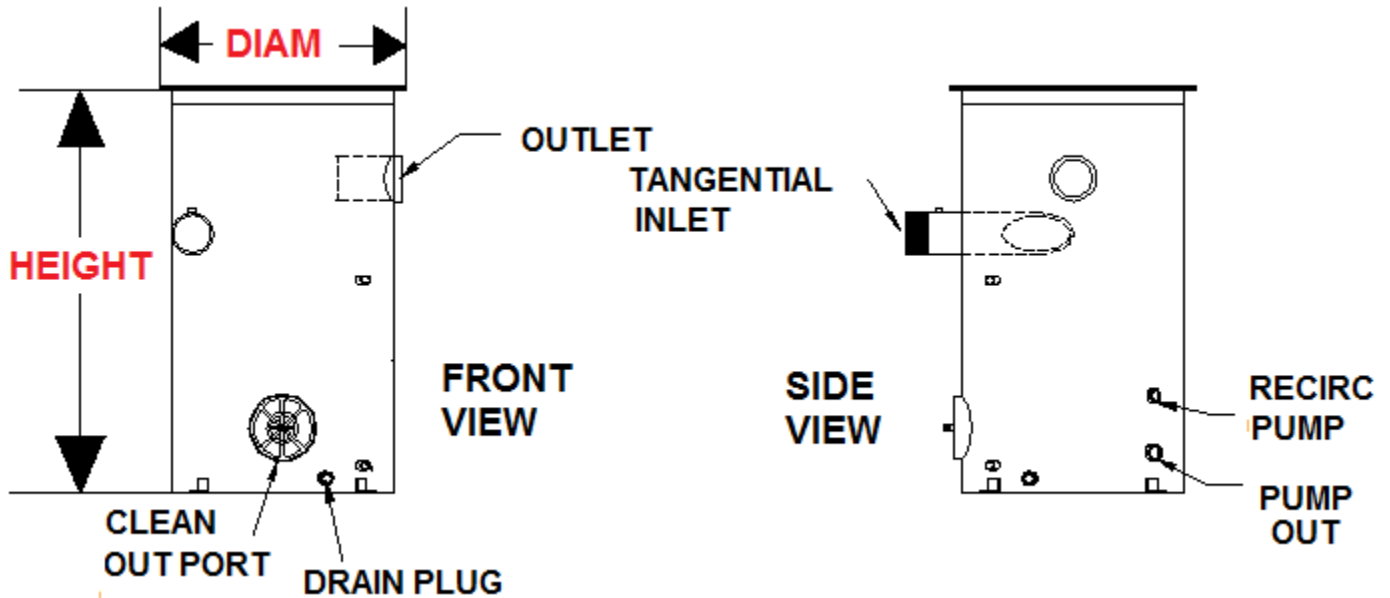


Applications

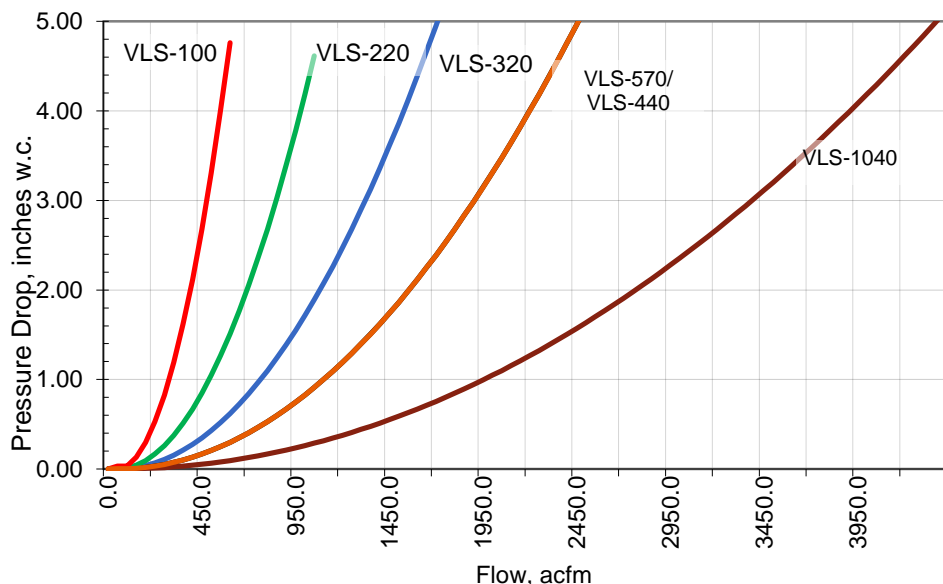
- Soil vapor extraction
- Dual phase extraction
- Liquid ring pump
- Vacuum or pressure
- Blowers-Side Channel/regenerative, multi-stage regenerative, positive displacement, and centrifugal
- Industrial industry
- Remediation industry
- Vapor GAC
- Bio venting systems
- Excavation venting

H2K Technologies, Inc.
7550 Commerce St
Corcoran, MN 55340
Phone: 763.746.9900
Fax: 763.746.9903
www.H2KTECH.com
Sales@H2KTech.com

Model Number	Inlet/Outlet Connection	Height In.	Diam. In.	Rated Flow SCFM	Separator Total Volume Gallons	Liquid Holding Volume Gallons	Shipping Weight Lbs.	Operating Weight Lbs.	Vacuum/ Rating, "Hg/PSI
VLS-033	3" FPT	30	18	500	33	10	50	160	17" Hg/9psi
VLS-082	4" FPT	44	24	500	82	30	90	325	17" Hg/9psi
VLS-100	4"/6" FPT	50	22	650	100	40	140	480	30" Hg/9psi
VLS-220	8"/10" 150 lb flange	72	30	1440	220	75	350	1,020	30" Hg/9psi
VLS-320	10"/12" 150 lb flange	72	36	2600	320	110	450	1,356	30" Hg/9psi
VLS-440	12" 150 lb flange	74	42	2600	440	150	625	1,860	17" Hg/9psi
VLS-570	12" 150 lb flange	74	48	2600	570	195	860	2,465	17" Hg/9psi
VLS-1040	16" Duct flange	84	60	4500	1,040	200	1,250	2,978	10" Hg/5psi
VLS-1500	20" Duct flange	85	72	7000	1,500	440	1,525	5,325	10" Hg/5psi
VLS-3055	32" Duct flange	96	96	11,000	3,055	780	1,820	8,532	10" Hg/5psi



Pressure Drop for VLS Series Vapor/Liquid Separators



Options

- Stainless steel or Fiberglass re-enforced plastic construction (low pressure)
- Stainless steel coalescer media
- ASME designed & stamped for vacuum or pressure
- Full vacuum design
- Immersion heaters, NEMA 4 or NEMA 7 for freeze protection
- 1" recirculation port for pumping under high vacuum
- Air filter material and sizes
- Enamel internal finish, epoxy coatings or hot dipped galvanized finish
- Flanged or NPT inlet and outlet connections
- Flow, pressure, level & temperature gages or transmitters
- Heat trace for classified or non-classified electrical areas for freeze protection
- Clean out Ports
- Internal aeration diffuser for low level stripping or iron oxidation
- DP gage across filter, demister or both
- R-5 insulation with jacket, (steel or aluminum jacket)
- Vacuum relief valve

Additional Photos

